

A large, stylized graphic of a flower or leaf cluster on the right side of the page. It consists of several overlapping, teardrop-shaped segments in various shades of orange, yellow, and green, arranged in a circular pattern around a central white space.

TOWNCENTER

COSTA · DEL · ESTE



Project Location





TownCenter Costa del Este, the future social destination to enjoy a innovative style and shopping in dynamic environments. This mall design, color and textures will reflect a active and vibrant lifestyle, incorporating contemporary urban pleasures and charm of outdoor.

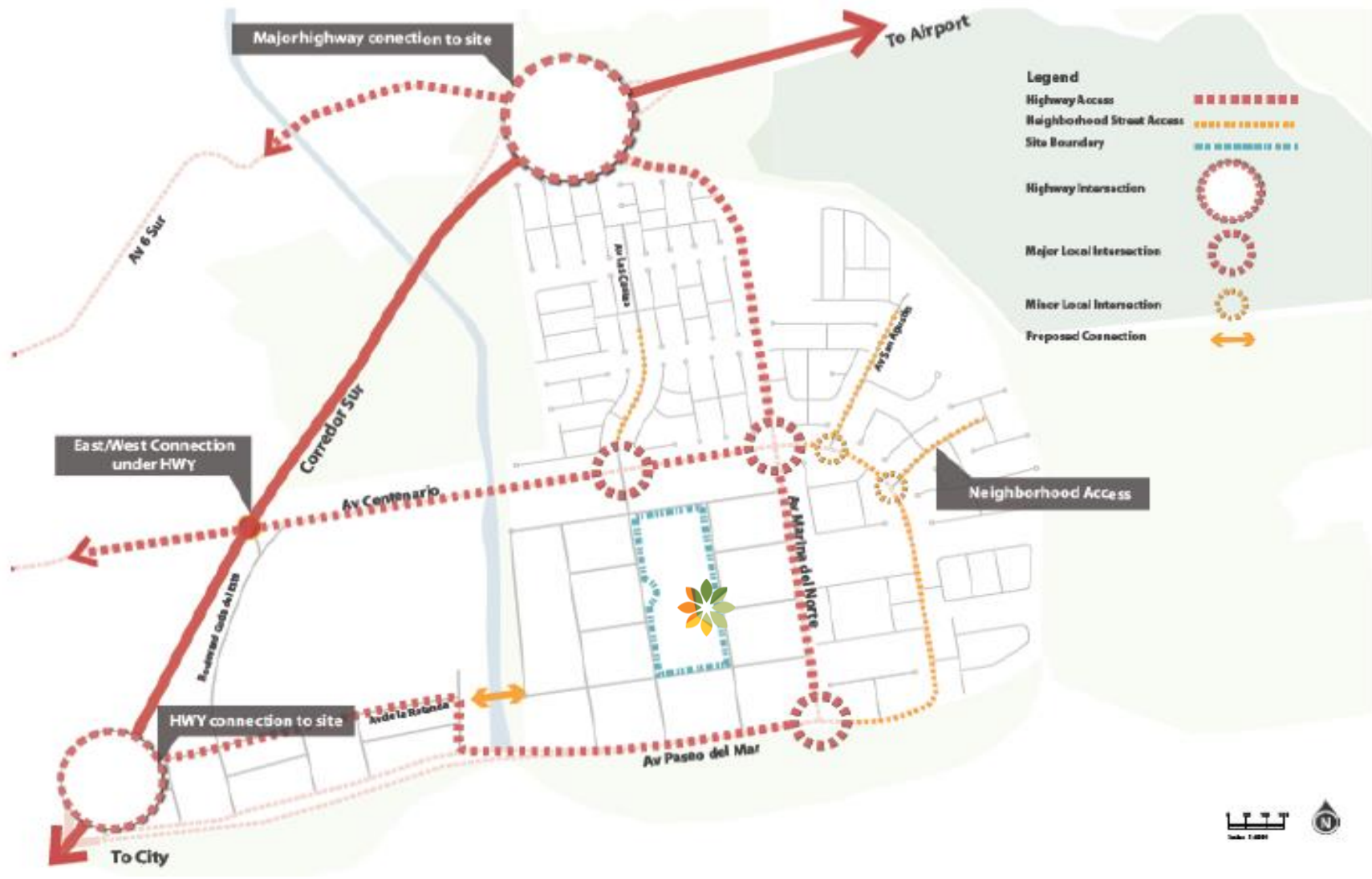
The shopping center will offer exclusive brands shops for the whole family, also will be the ideal meeting point to hangout, with many restaurants, cinema, theater and entertainment with artistic activities that will contribute to the welfare and culture in Costa del Este .

The project will have area offices and clinics.





Costa del Este and Santa María

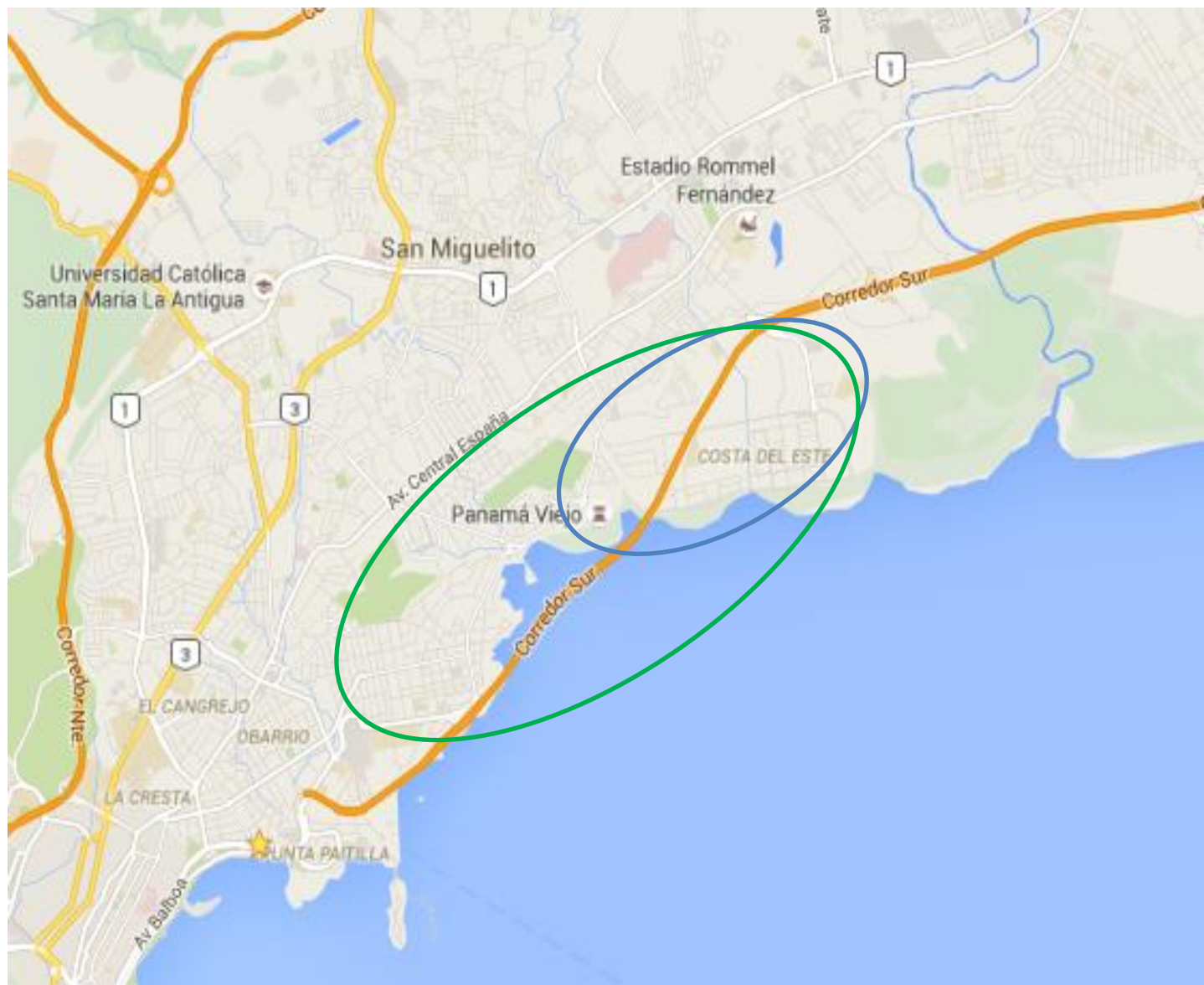


Access of Costa del Este

Areas of influence

Primary areas contained in :
Costa del Este and Santa Maria

Secondary area :
Cincuentenario and a little
San Francisco and Obarrio .



Concept and Design



RETAIL

SOCIAL
HUB
& HOTEL

HEALTH
&
WELLNESS

KIDS
ZONE

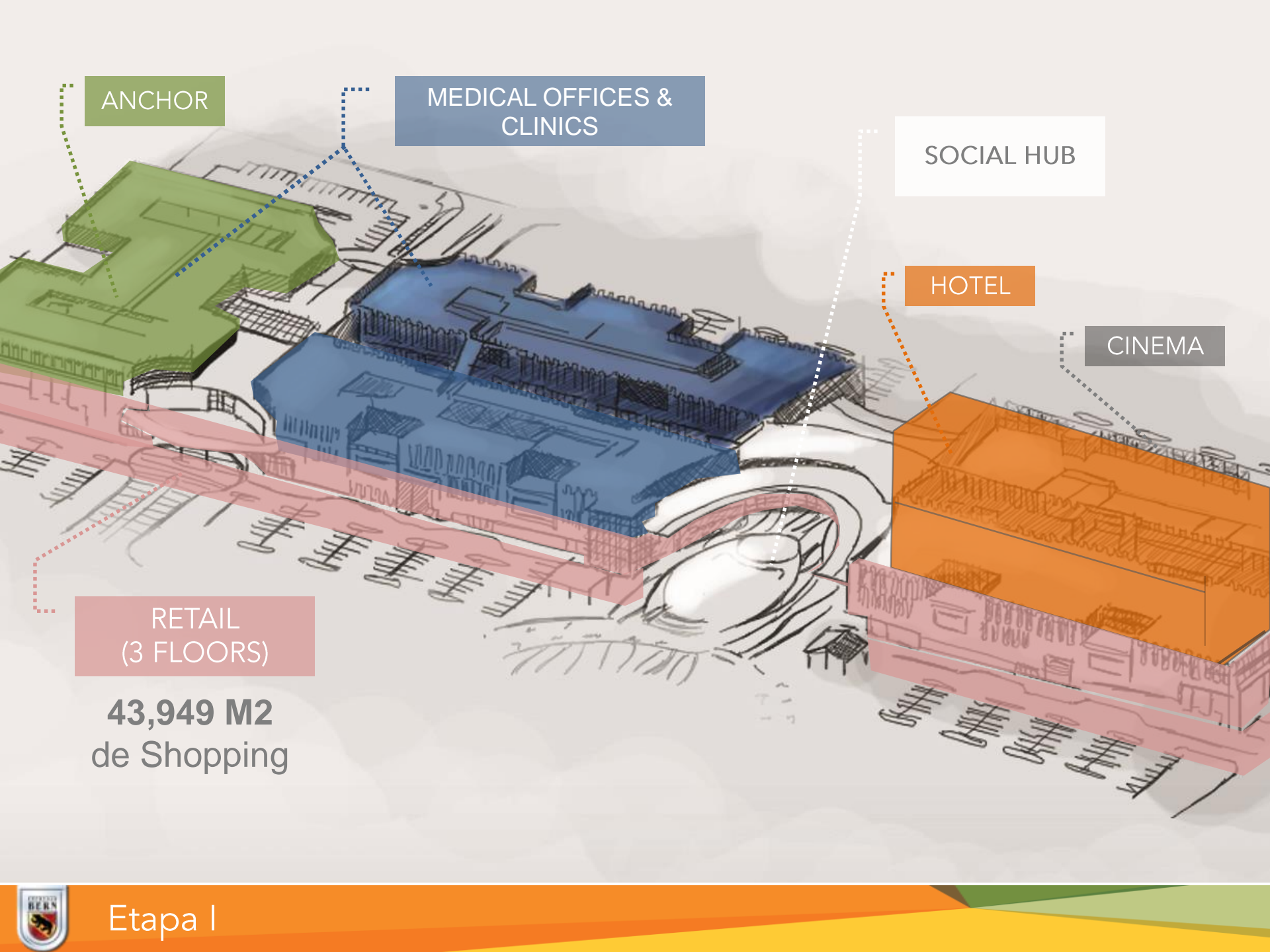
ENTRETAIMENT



TOWNCENTER
COSTA · DEL · ESTE

- Social meeting point
- Hearth of the community
- Vibrant life, closeness, inspires happiness and wellness





ANCHOR

MEDICAL OFFICES &
CLINICS

SOCIAL HUB

HOTEL

CINEMA

RETAIL
(3 FLOORS)

43,949 M2
de Shopping



Etapa I



Inside view of the Mall from Level R3



Lateral View Social Hub



Front View Social Hub



Hotel with 250 keys
to complement the shopping experience
of visitors to Panama city.



Side View of the Hotel



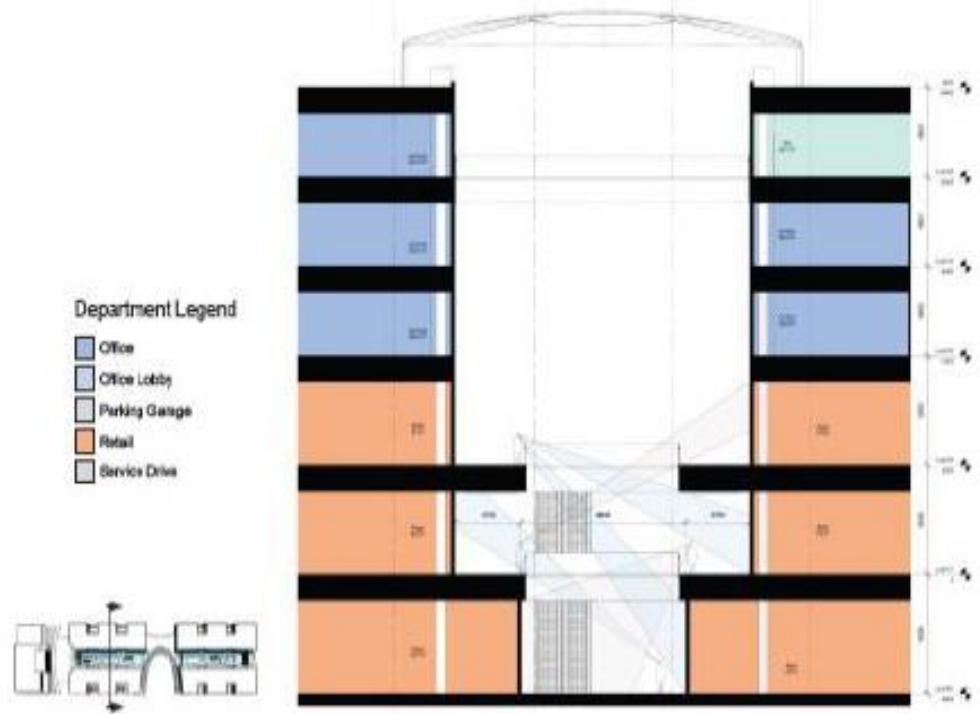
Inspiration Social Hub Design



1,200 parkings in outdoors/aprox. and
2,500 indoors/aprox.



View from the central court



Typical Mall Section

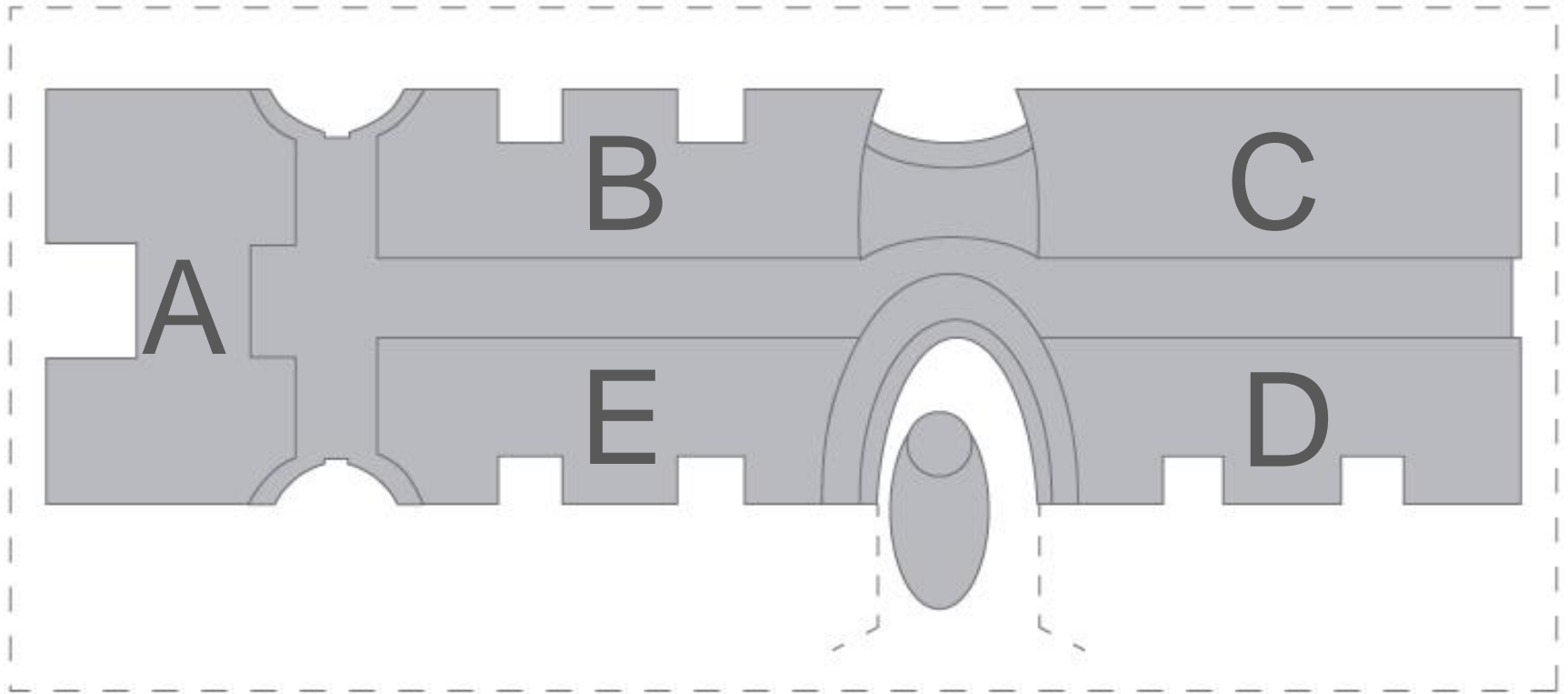


Architectural plans

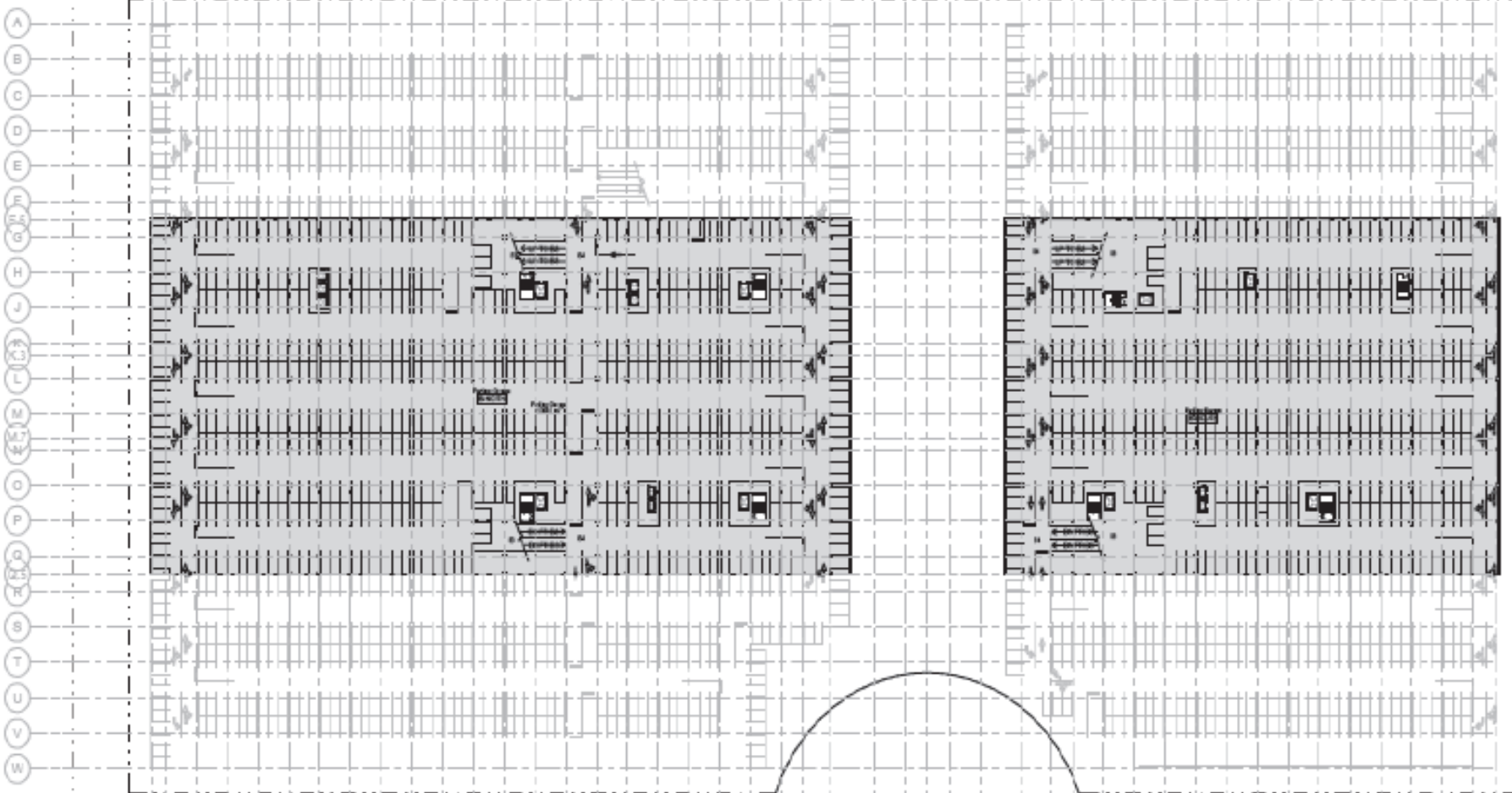


NORTH

SOUTH



1 2 3 4 5 6 7 8 9 10 11 12 13 14 15 16 17 18 19 20 21 22 23 24 25 26 CL 27 28 29 30 31 32 33 34 35 36 37 38 39 40 41 42 43 44 K430

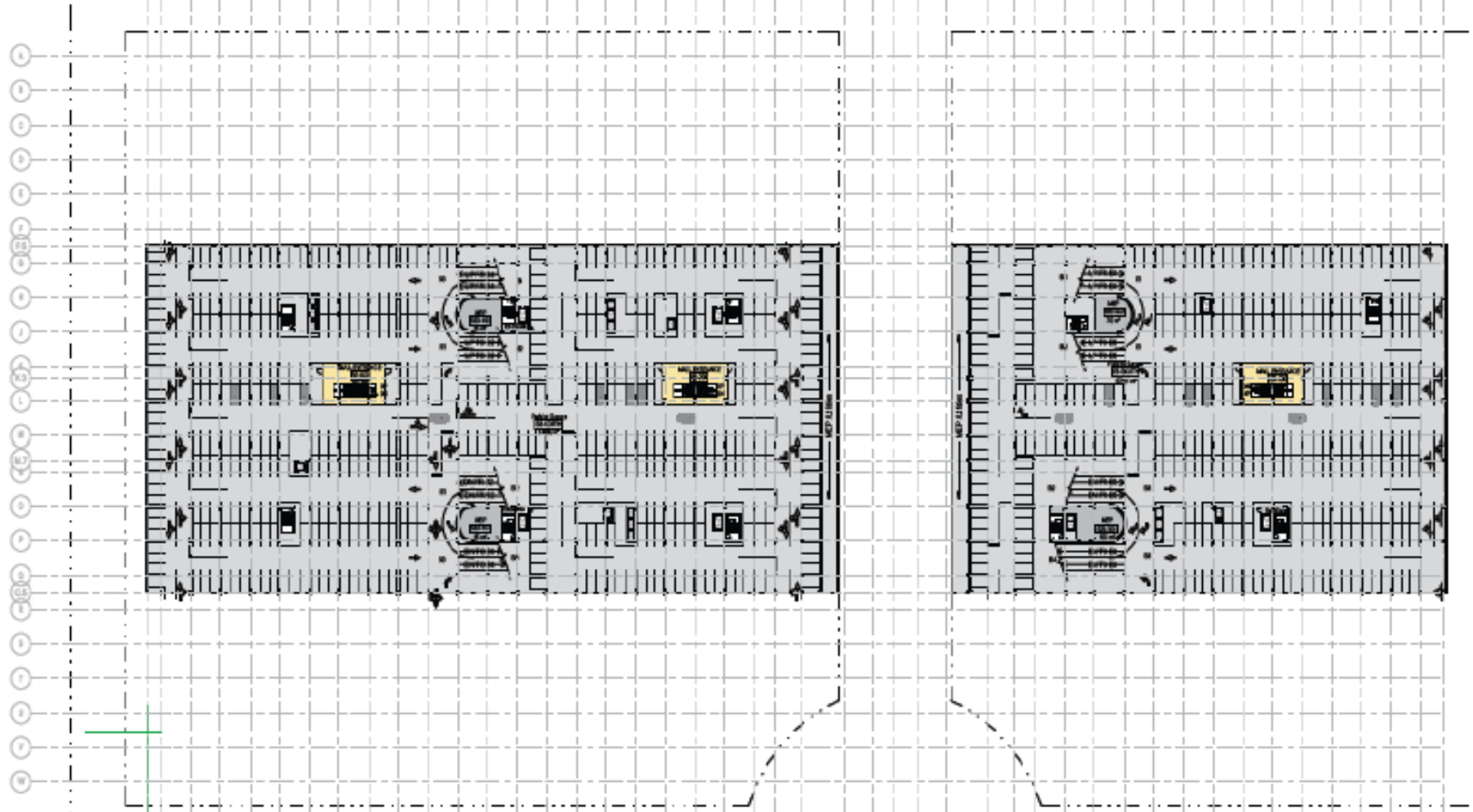


- | | | | | | | |
|----------------|--------------|----------------|--------------|----------------|-------------|----------------------|
| Anchor | Cinema | F&B Seating | MEP | Parking Garage | Retail | Terrace |
| Anchor Service | Cinema Lobby | Kiosk | Office | Patio Seating | Spa | Vertical Circulation |
| BOH | F&B | Mail Concourse | Office Lobby | Restrooms | Supermarket | |



Parking P1 and P2

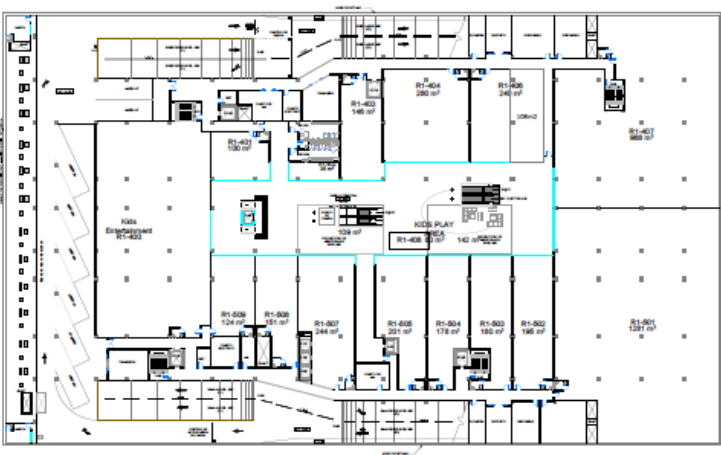
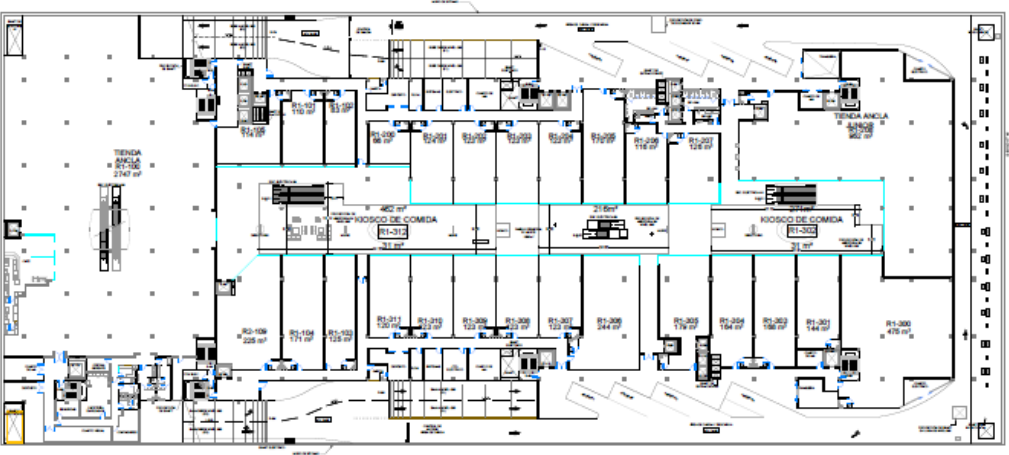
1 2 3 4 5 6 7 8 9 10 11 12 13 14 15 16 17 18 19 20 21 22 23 24 25 26 27 28 29 30 31 32 33 34 35 36 37 38 39 40 41 42 43 44 45

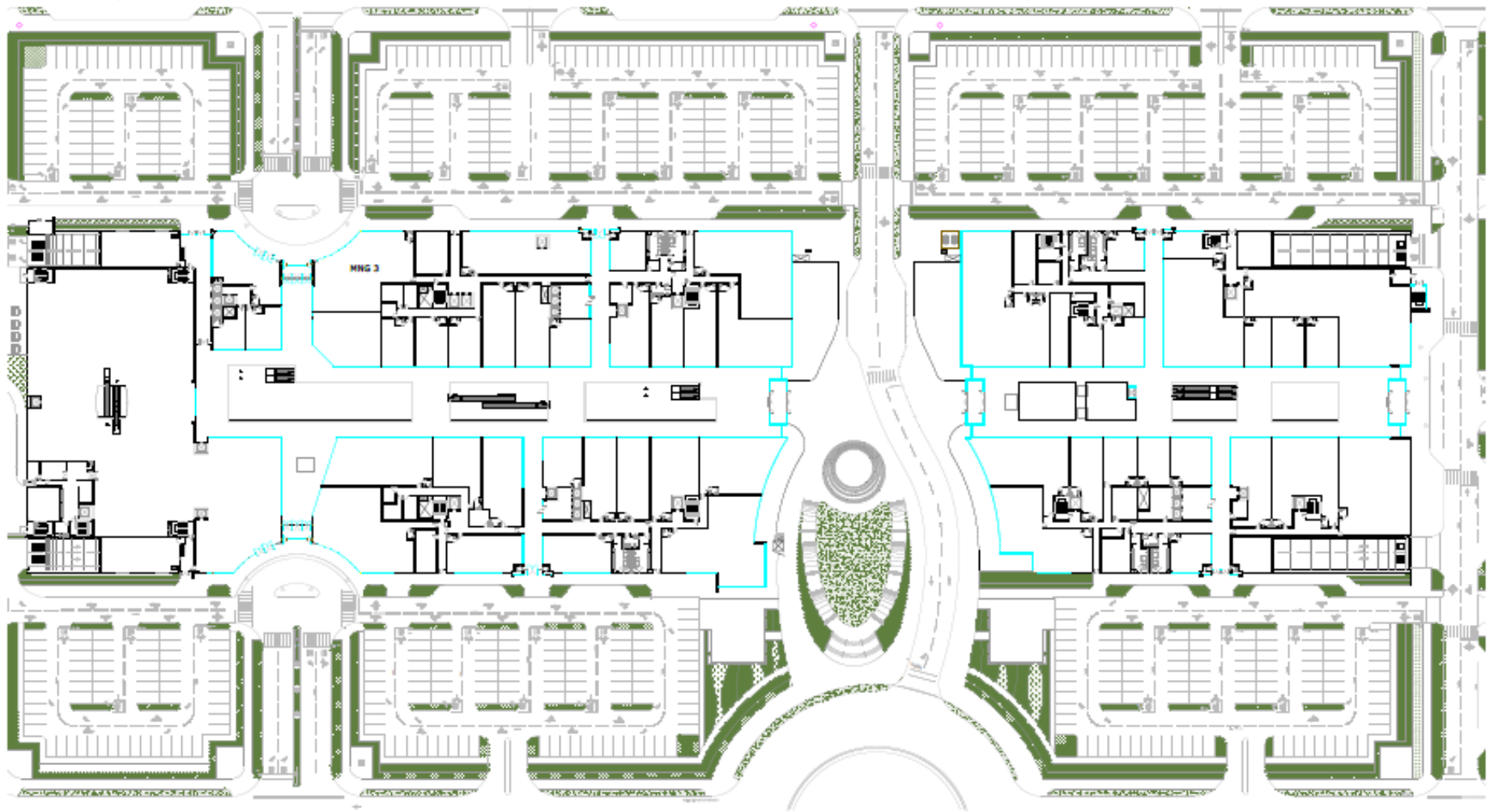


- Anchor
- Cinema
- F/B Seating
- MEP
- Parking Garage
- Retail
- Terrace
- Anchor Service
- Cinema Lobby
- Kiosk
- Office
- Patio Seating
- Spa
- Vertical Circulation
- EOH
- F/B
- Mall Concourse
- Office Lobby
- Restrooms
- Supermarket

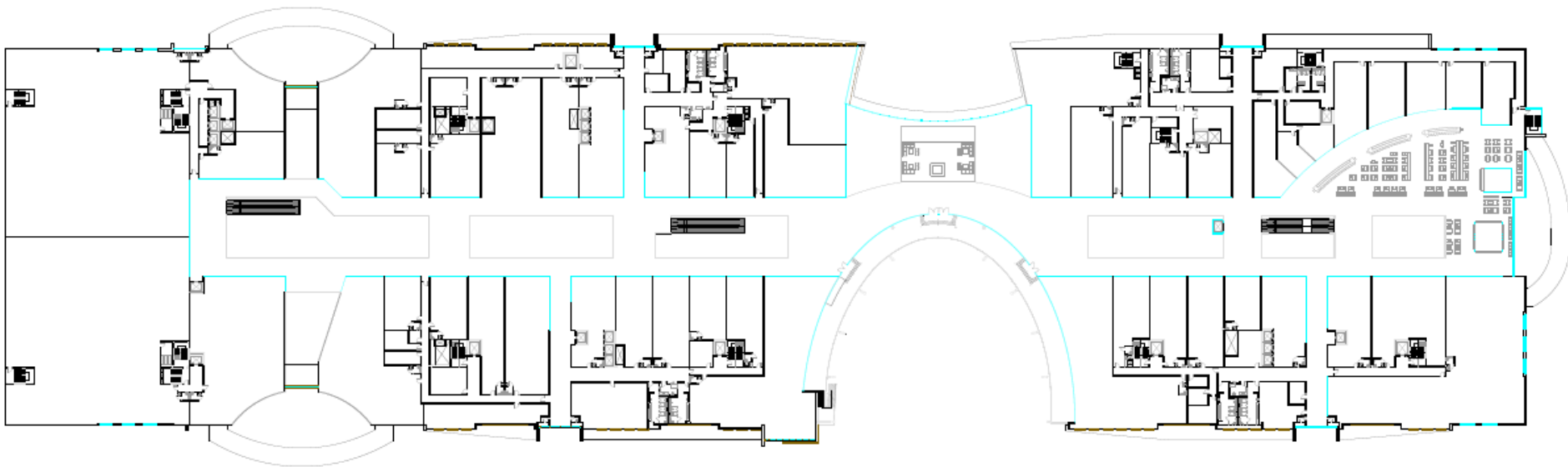


Parkings P3





Level R2

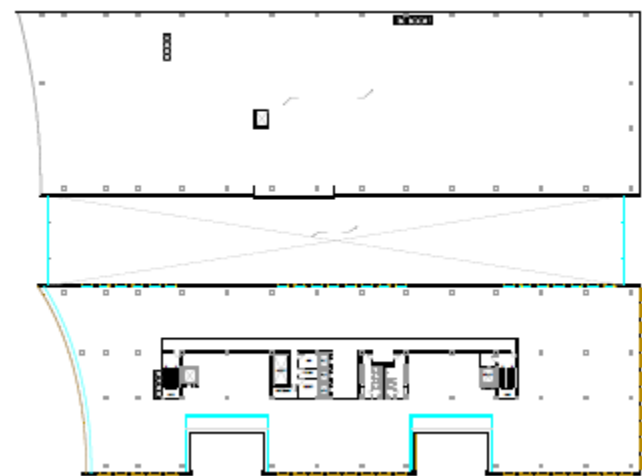
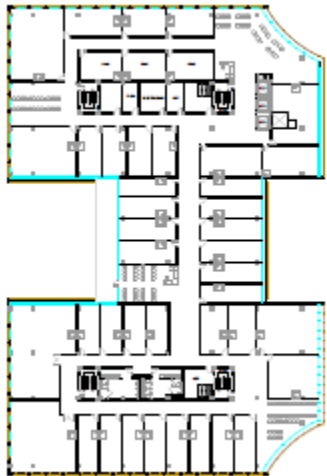


Level R3



Level 400





Empresas Bern
(507) 214-2376
info@towncenter.com.pa
Dina Caponi

