



LE<sup>E</sup>MARQUE

AT COSTA DEL ESTE



*LE MARQUE, Where luxury reaches new heights*

---





-  COSTA DEL ESTE
-  CENTRO FINANCIERO
-  CORREDOR SUR



# LOCATION Costa del Este

Vista al Parque  
de Costa del Este



Vista al mar

# COSTA DEL ESTE

---



## *A luxury project in an exclusive location*

Costa del Este is an exclusive area of real estate development in Panama City located in Juan Diaz, near Parque Lefevre. It was designed with high quality standards, completely underground wiring, residential areas with private access, separate wastewater processing plant, among others.



3 Schools



3 Religious  
Temples



18 Shopping  
Plaza

# THE PROJECT

---



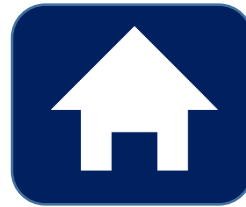
Le Marque is a modern residential tower which provides a unique architectural design to its environment, located in the heart of the exclusive area of Panama City, Costa del Este. The tower is located near parks with green areas, a refreshing boulevard and a few steps away from the most luxurious shopping mall of the area.



Tower with  
48 levels



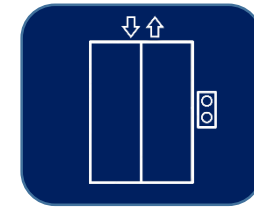
From 2701,  
2809.38 and  
2883.68 sq.ft.



Three  
apartments  
per level



Three-  
bedroom  
apartments



Cuatro  
modernos  
elevadores

# THE BUILDING

---



*Your new home  
with amenities of a private club*

- Full auxiliary power plant
- Water reserve tank
- 24hrs security
- Visitor parking
- Area for service personnel
- Storages available

# APARTMENTS



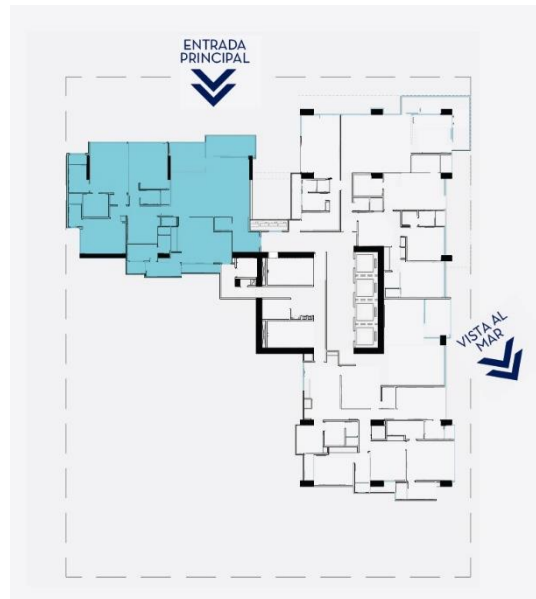
LE MARQUE  
AT COSTA DEL ESTE

- Master bedroom with complete bathroom and walk-in closet
- Two secondary bedrooms with bathroom and linear closets
- Open area for den or studio
- Living room and dining room
- Kitchen
- Family room
- Guest restroom
- Independent service entrance
- Maid's quarter with bathroom
- Laundry
- Balcony





# MODEL A - 2701 sq.ft.



# MODEL B - 2809.38 sq.ft.



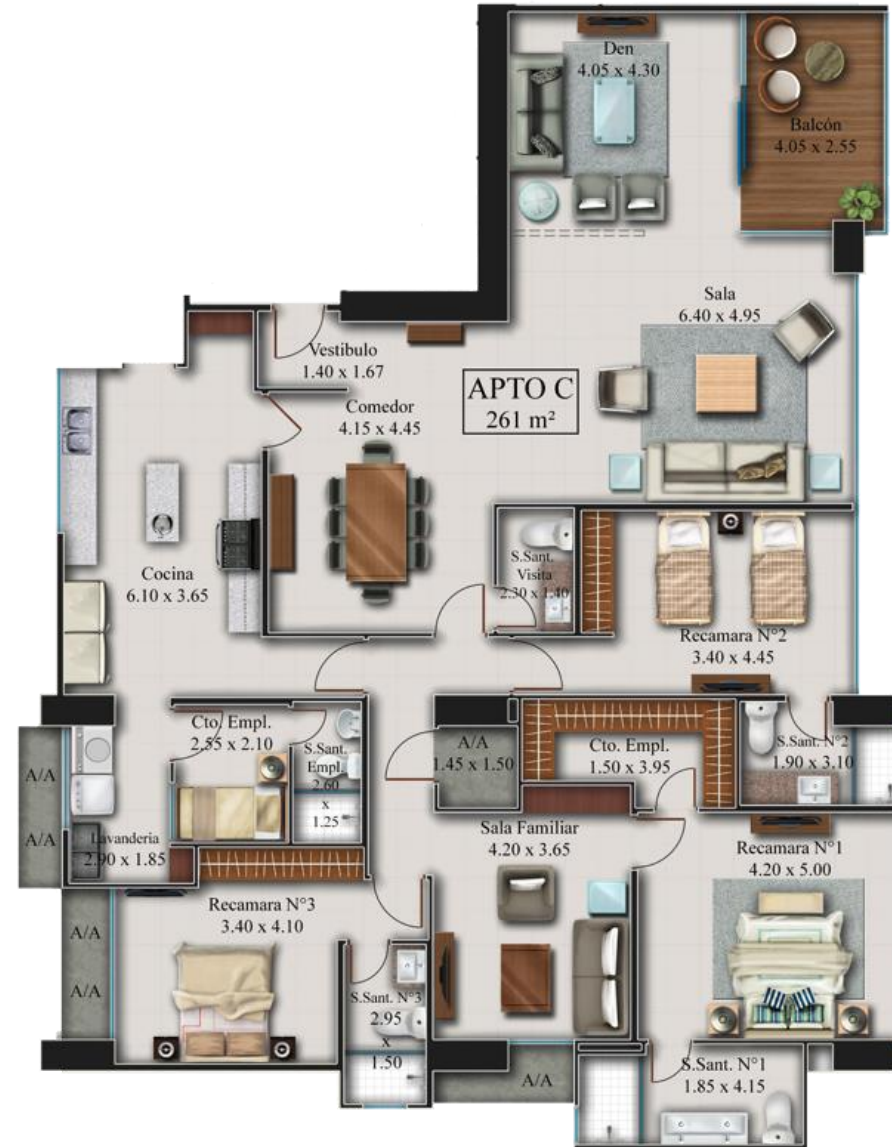
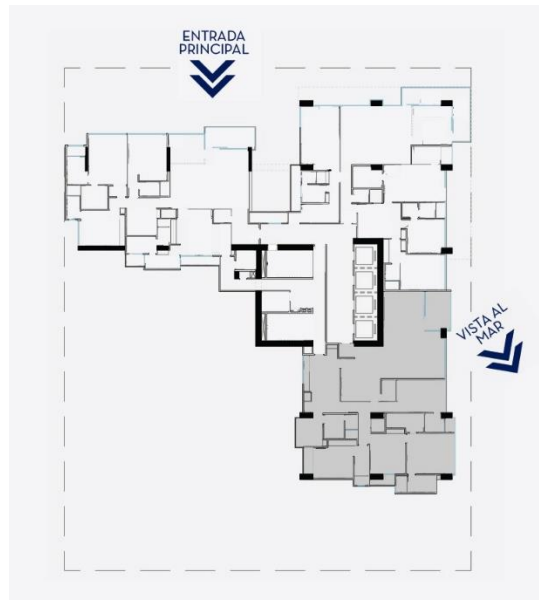
LE MARQUE  
AT COSTA DEL ESTE



# MODEL C – 2883.68 sq.ft.



LE MARQUE  
AT COSTA DEL ESTE





**FAMILY ROOM- MODEL B**

---

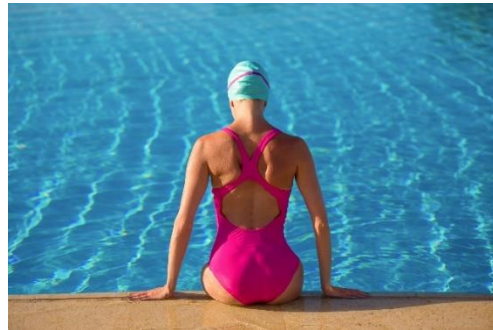
# AMENITIES



LE MARQUE  
AT COSTA DEL ESTE

Social area located in the fifth floor

- Garden
- Family pool
- Outdoor lap pool
- Open and covered terraces
- Sun deck
- Spa
- Playground
- Barbecue area
- Multipurpose court
- Ballroom
- Private room for events
- Gym





## **SOCIAL AREA – FIFTH LEVEL**

---



## **GYM- FIFTH LEVEL**

---

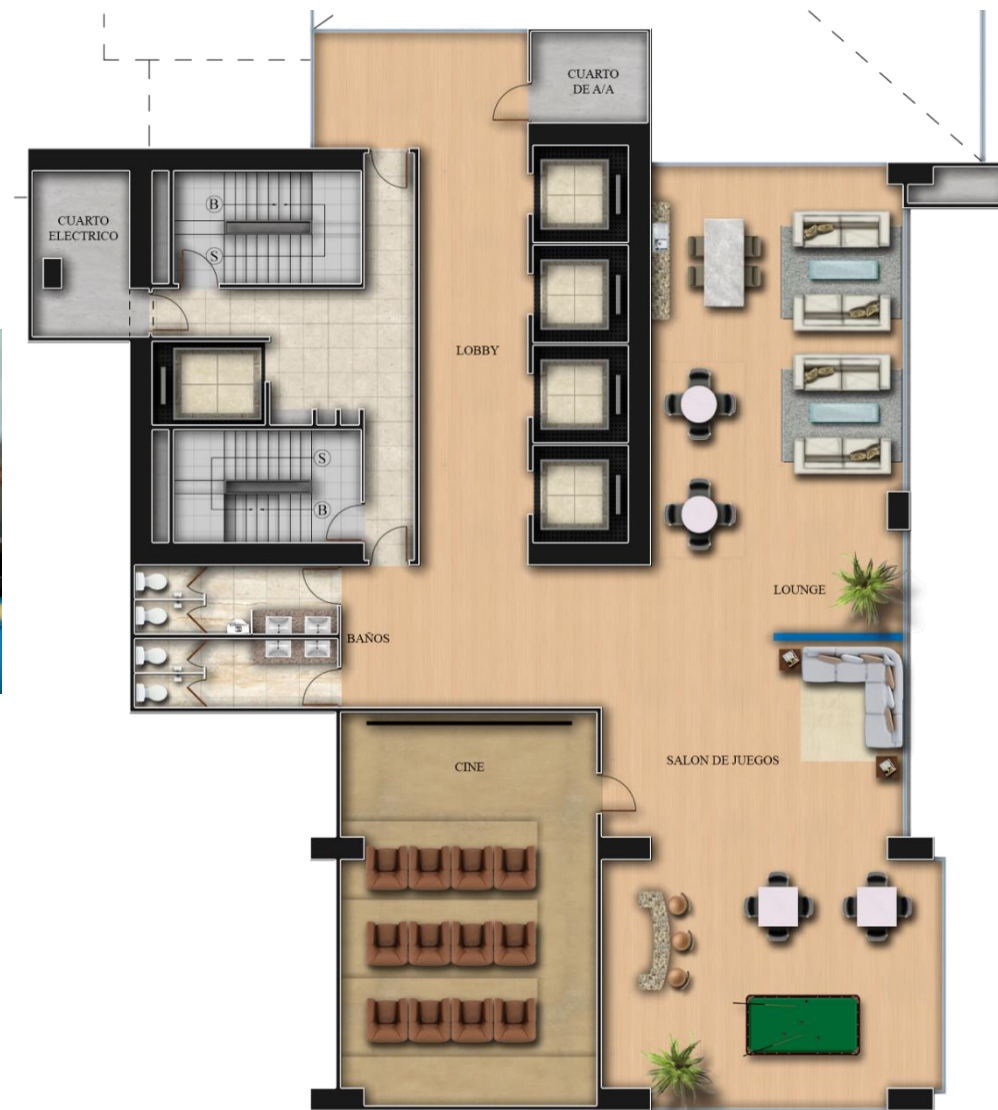
# AMENITIES



LE MARQUE  
AT COSTA DEL ESTE

Social area located in the sixth floor

- Game room
- Indoor cinema
- Lounge area







**LOUNGE AREA – SIXTH LEVEL**

---

# BENEFITS

---



Town Center Costa del Este, the future shopping center in this area will be the perfect mix between urban pleasures and community life. A social destination that will offer a range of amenities and services including shopping, restaurants, entertainment, movie theater, social hub, hotel and Hospital and Clinics HPP Costa del Este (Hospital Punta Pacifica).





info@empresasbern.com  
(507) 214-2376  
empresasbern.com  
Ave. Balboa, Bayfront Tower



*The images contain an artistic representation of the project. The developer reserves the right to make changes without prior notice.*