

---

# PLAZA DEL ESTE

---

COSTA DEL ESTE

---





PLAZA  
DEL ESTE  
COSTA DEL ESTE

# THE PROJECT

---

PLAZA  
DEL ESTE  
COSTA DEL ESTE



Plaza del Este is unique space in its own class, designed to host world-class corporations seeking excellence in an exclusive location.

A modern and efficient Corporate Building, which is environmentally and user-friendly.

# EL PROYECTO

---

PLAZA  
DEL ESTE  
COSTA DEL ESTE



Located in the middle of Costa del Este's business area: over the Costa del Este Boulevard, and right across the street of the Academia Interamericana of Panama. It enjoys views to Panama City and Costa del Este's Central Park.

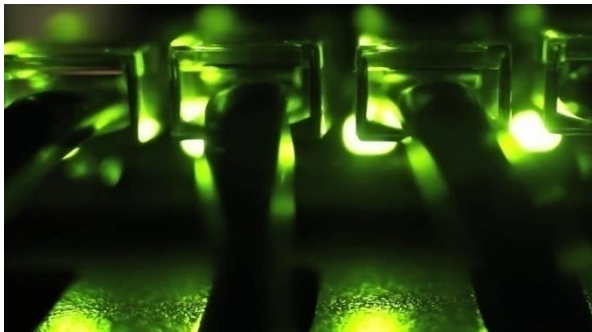


## **EFFICIENT INTEGRATION**

- Indoor and outdoor common areas:
  - Spacious lobbies.
  - Central Plaza.
  - Meeting rooms.
  - Open terraces and parks.
- Commercial Area provides support services, ideal for establishing companies and their teams.
- Modern set of elevators with a total of thirteen (13) units throughout the complex. Ten (10) units for office towers.
- Green rooftops with lush and vibrant gardens.
- Lighting systems with motion sensors for common areas and parking spaces.



- Modern systems for access control and video surveillance (CCTV).
- Luxurious lobbies with information and control areas.
- From the basement you can only reach the ground floor and mezzanine by elevator and independent stairs.
- Independent access for visitors parking.
- Full auxiliary Power Plant.
- Water storage tanks, and a fire sprinkler system.
- Pressurized emergency stairs for safe and fluid evacuation.



# LEED CERTIFICATION

PLAZA  
DEL ESTE  
COSTA DEL ESTE



PLAZA DEL ESTE  
Panama, Panama

HAS FULFILLED THE REQUIREMENTS OF  
**PRE-CERTIFICATION**

UNDER LEADERSHIP IN ENERGY AND ENVIRONMENTAL DESIGN (LEED®) FOR CORE & SHELL DEVELOPMENT LEVEL:

**GOLD**

DOCUMENTATION HAS BEEN SUBMITTED FOR THIS PROJECT, WHICH DEMONSTRATES  
AN INTENT TO DESIGN AND BUILD A HIGH-PERFORMANCE LEED GREEN BUILDING.

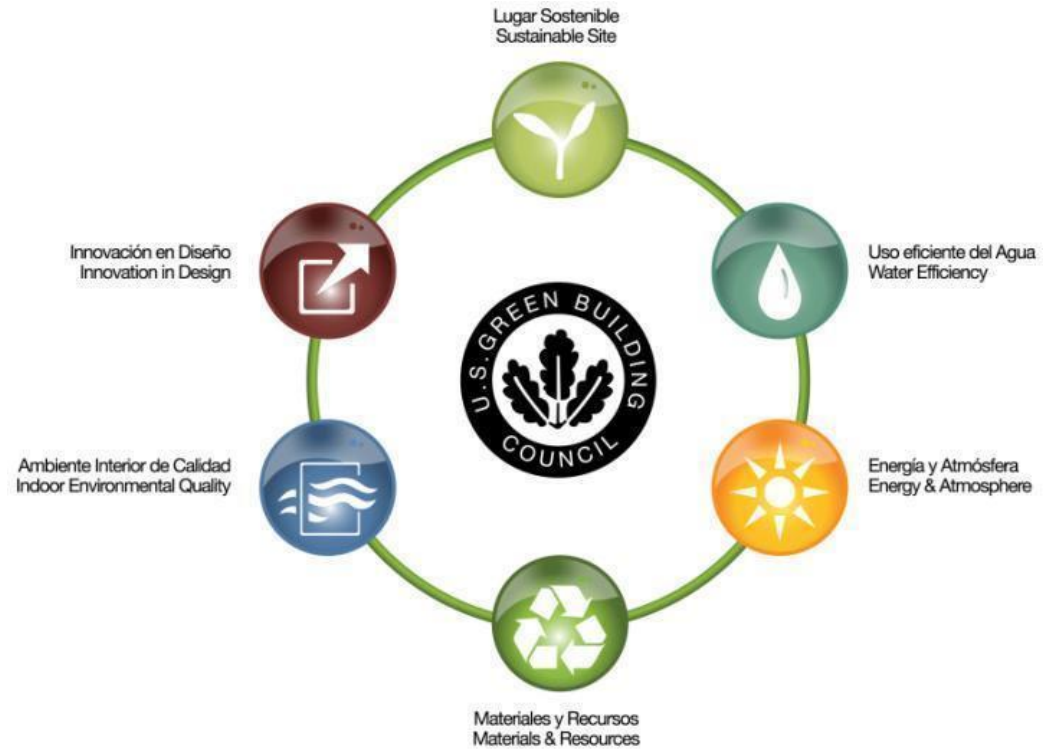
SEPTEMBER 2013

A handwritten signature in black ink, appearing to be "R." with a horizontal line extending to the right.

S. RICHARD FEDRIZZI, PRESIDENT & CEO  
U.S. GREEN BUILDING COUNCIL

A handwritten signature in black ink, appearing to be "Mahesh Ramanujam" in a cursive style.

MAHESH RAMANUJAM, PRESIDENT  
GREEN BUILDING CERTIFICATION INSTITUTE

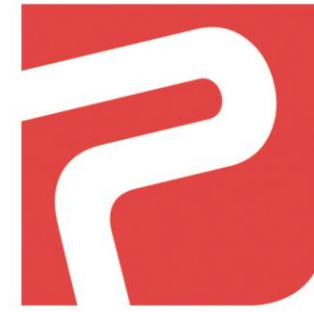






# Hines

- **Hines** is a professional services firm specializing in commercial real estate services and investment management, with a global portfolio of more than 18 million square meters under management.
- They will be responsible for: preventive and corrective maintenance of the business complex; security systems management; common area maintenance: cleaning, gardening, fumigation, recycling and parking lot security.



**PROYECO**

**PLAZA  
DEL ESTE**  
COSTA DEL ESTE

**Collaborates with:**

- 1. Construction Quality**
- 2. Construction Schedule**



# FLOOR PLAN - LEVEL 700 TO 1100

---

PLAZA  
DEL ESTE  
COSTA DEL ESTE



Integrated Floor plans of the West and East Towers 3,172 m<sup>2</sup> approx. or 34,128.57 sq.ft.

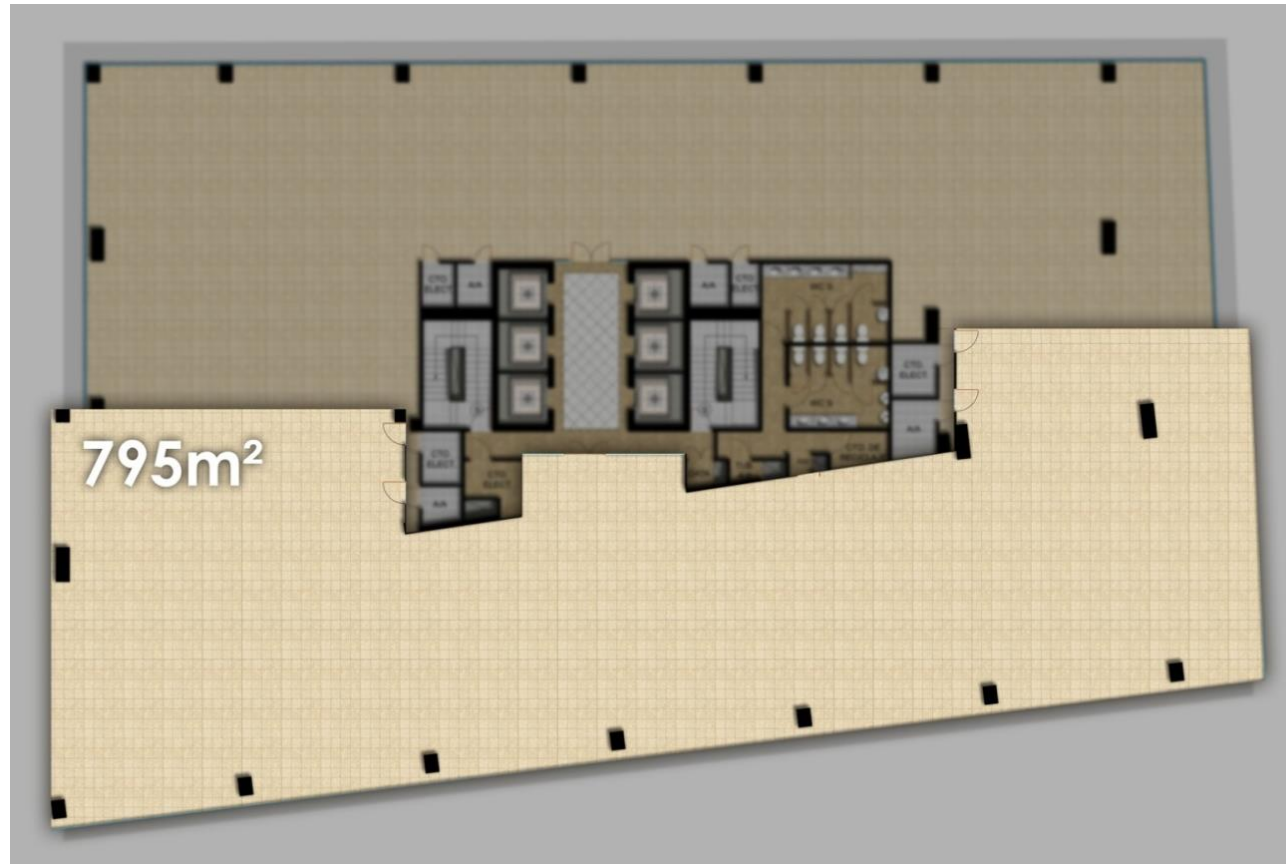
# FLOOR PLAN - LEVEL 1500 TO 2000



West Tower - 16,247 sq.ft. approx.  
Column Free

# FLOOR PLAN - LEVEL 1600 AND 1700

---



West Tower - 8,554.20 sq.ft.  
Column Free

info@empresasbern.com  
(507) 214-2376 / 204-5637  
empresasbern.com  
Ave. Balboa, Bayfront Tower

[www.plazadeleste.com](http://www.plazadeleste.com)

